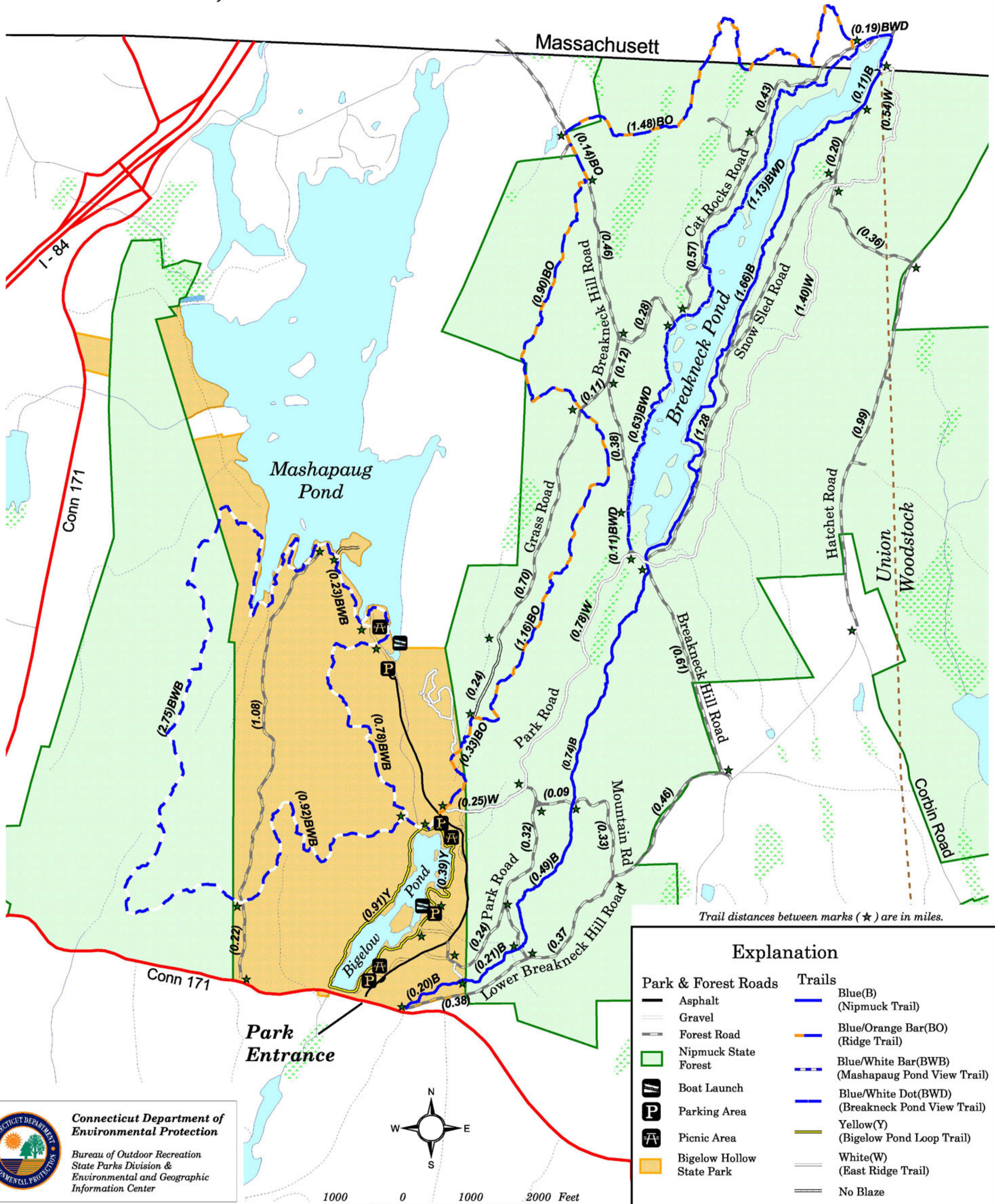


Nipmuck State Forest Bigelow Hollow State Park

Union, Connecticut




Trail distances between marks (★) are in miles.

Explanation

- | | |
|--------------------------------|--|
| Park & Forest Roads | Trails |
| — Asphalt | Blue(B)
(Nipmuck Trail) |
| — Gravel | Blue/Orange Bar(BO)
(Ridge Trail) |
| — Forest Road | Blue/White Bar(BWB)
(Mashapaug Pond View Trail) |
| — Nipmuck State Forest | Blue/White Dot(BWD)
(Breakneck Pond View Trail) |
| — Boat Launch | Yellow(Y)
(Bigelow Pond Loop Trail) |
| — Parking Area | White(W)
(East Ridge Trail) |
| — Picnic Area | — No Blaze |
| — Bigelow Hollow State Park | |

Note: The boundaries of State-owned properties as shown on this map are approximate.



Connecticut Department of Environmental Protection
Bureau of Outdoor Recreation
State Parks Division & Environmental and Geographic Information Center

Map Date - December 2003

